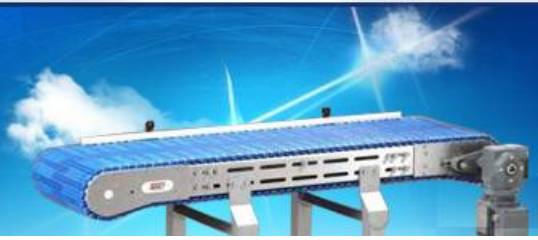




Conveyors Troughing Idlers Rollers Technical Specifications



Conveyor Idler Product Specification HIC Manufactured UNIVERSAL Brand

Universal Idlers ensures **achievement of operational success of belt conveyors**, in a way, the shell is made form Mild Steel ERW black steel tube superseding IS: 9295 & IS: 1239, pressed steel **housing** from CRCA sheet, **shaft** of bright steel bar, **sealing system** consisting of (back-seal, double labryinth, moulded dust cover, a rain cap), single piece fabricated steel idler **frame** and rollers fitted with seize resistant **ball bearings** and supersedes IS: 8598.



Conveyors Troughing Idlers

Material Handling Conveyor Idler Rollers

- Troughing Idler (3/5 rolls) for carrying
- Flat Impact Belt Conveyor Idler
- Return Idler (1 roll) for return
- Self-Aligning Return Idler
- Troughing Impact Idler (rubber lined)
- Idler Roller Others, as per specific requirements

Material Handling Equipment Conveyor Belt Roller Technical Specification

| BELT WIDTH | ROLLER LENGTH | | MOUNTING DIMENSIONS | | HEIGHTDIMENSION"H" ROLLERDIA "D" | | | | | | | | | |
|---------------|------------------|------|------------------------|------|-------------------------------------|------|-------|-------|-------|-----|-------|-------|-----|-----|
| | L | L3 | L1 | L2 | M-d | 76.1 | 88.98 | 101.6 | 114.3 | 127 | 139.7 | 152.4 | 159 | 165 |
| 400 | 160 | 500 | 690 | 755 | M12 | 200 | 200 | 200 | 225 | 225 | - | - | - | - |
| 450 | 190 | 550 | 740 | 805 | M12 | 200 | 200 | 200 | 225 | 225 | - | - | - | - |
| 500 | 200 | 600 | 790 | 855 | M12 | 200 | 200 | 200 | 225 | 225 | - | - | - | - |
| 600 | 235 | 700 | 890 | 950 | M12 | - | - | - | 225 | 225 | - | - | - | - |
| 650 | 250 | 750 | 940 | 1000 | M12 | - | - | - | 225 | 225 | 275 | - | - | - |
| 750 | 290 | 850 | 1040 | 1100 | M12 | - | - | - | 225 | 225 | 275 | - | - | - |
| 800 | 315 | 950 | 1090 | 1150 | M12 | - | - | - | 225 | 225 | 275 | 275 | 275 | - |
| 900 | 350 | 1050 | 1190 | 1250 | M12 | - | - | - | 225 | 225 | 275 | 275 | 275 | - |
| 1000 | 380 | 1150 | 1290 | 1350 | M12 | - | - | - | 225 | 225 | 275 | 275 | 275 | - |
| 1200 | 465 | 1400 | 1490 | 1560 | M16 | - | - | - | 240 | 240 | 275 | 275 | 275 | 290 |
| 1400 | 530 | 1600 | 1690 | 1750 | M16 | - | - | - | 240 | 240 | 275 | 275 | 275 | 290 |
| 1600 | 600 | 1800 | 1900 | 1950 | M16 | - | - | - | 240 | 240 | 275 | 275 | 275 | 290 |
| 1800 | 670 | 2000 | 2100 | 2150 | M20 | - | - | - | 240 | 240 | 275 | 275 | 275 | 290 |
| 2000 | 750 | 2200 | 2300 | 2350 | M20 | - | - | - | 240 | 240 | 275 | 275 | 275 | 290 |



Contact For Quote:

HIC INTERNATIONAL CO -Cast Iron Products Idlers Roller Div.

D-136, Shankar Road, New Delhi - 110060, India

Phone: 91-11-6547 2400, 2874 5120

Fax: 91-11-2874 2791

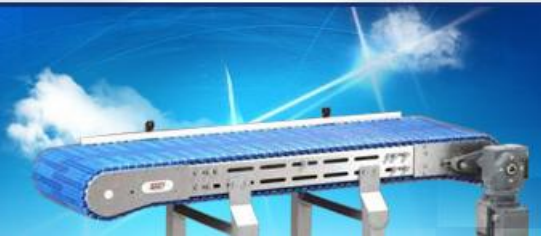
E-mail : universal@hic-india.com; belts@universaldelhi.org

Website : <http://www.rubber-steel-industrial-products.com>

Key personnel : Mr. Anil Gupta, President



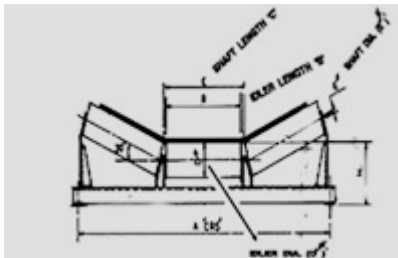
Conveyors Troughing Idlers Rollers Technical Specifications



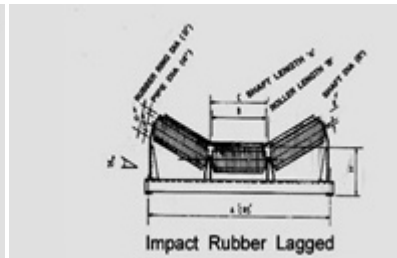
Conveyor Roller Information To Be Supplied With Enquiry or Order

1. For belt width, say 800mm or 1000mm & so on.
2. Degree of picking idlers i.e. 200 or 350 & so on.
3. Angle size to be used i.e. 50x50x6 or 65x65x6 & so on if at all specifically to be stated.
4. Idler pipe size (OD) in mm.
5. Overall O.D. in case rubber lined idlers are reqd. for Impact Idlers.
6. Housing material i.e. CRCA steel or C.I. & so on.
7. Bearing size, type & make i.e. 6205 or 420205 & so on.
8. Idler Roller Quantity in Nos.
9. Your detailed drawing. If possible.

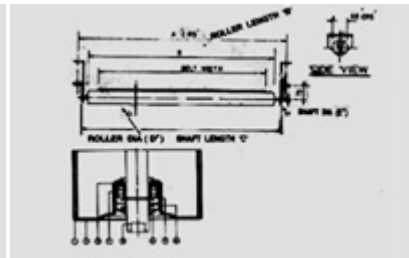
| P.no. | DESCRIPTION | QTN | MATERIAL |
|-------|-----------------|-----|------------|
| 1 | ROLLER PIPE | 1 | MS-erw |
| 2 | BEARING HOUSING | 2 | CRCA |
| 3 | REAR SEAL | 1 | NYLON-6 |
| 4 | BEARING | 1 | STANDARD |
| 5 | SHAFT | 1 | BRIGHT BAR |
| 6 | RUBBER SEAL | 2 | NEOPRENE |
| 7 | CIRCLIP | 1 | HEAVY DUTY |
| 8 | SEALS | 1 | NYLON-6 |



Carrying Troughing Idlers



Impact Rubber Lagged Rollers



Return Self Align Idlers

Disclaimer: Information's, written and verbal are provided by HIC, relative to its products which it determines to be reliable & no liabilities of whatsoever nature in regards to its uses. The purchaser of UNIVERSAL brand industrial products should determine for itself the suitability of such products.



Contact For Quote:

HIC INTERNATIONAL CO -Cast Iron Products Idlers Roller Div.

D-136, Shankar Road, New Delhi - 110060, India

Phone: 91-11-6547 2400, 2874 5120

Fax: 91-11-2874 2791

E-mail : universal@hic-india.com; belts@universaldelhi.org

Website : <http://www.rubber-steel-industrial-products.com>

Key personnel : Mr. Anil Gupta, President